

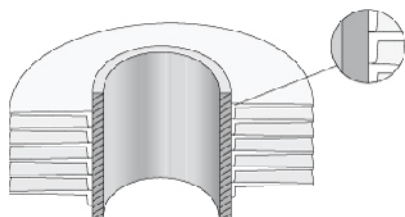


**HIGH FINNED TUBES &  
EXTRUDED TUBES**

## HIGH FINNED TUBES:

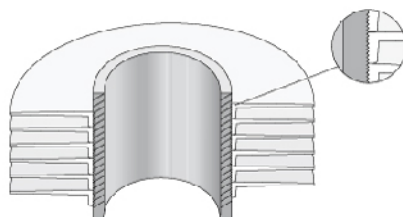
**Diameter range of base tube of 3/4" up to 2", fin number per inch: 6 – 11**

- ⦿ Fin-material: aluminium (some versions copper as well).
- ⦿ Base-tube-material: all materials (embedded types are limited).
- ⦿ Maximum length: up to 20 meters



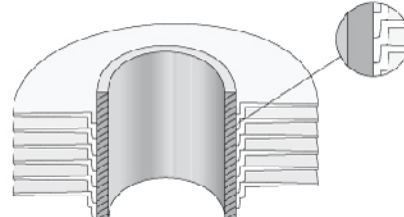
**L-FIN**

Temperature 130°C (270°F)



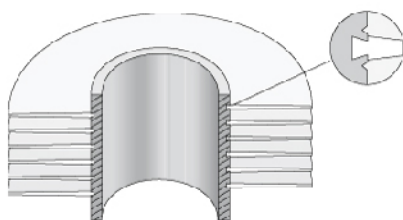
**KL-FIN**

Temperature 250°C (480°F)



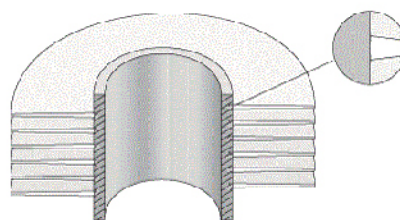
**LL-FIN (double L)**

Temperature 165°C (330°F)



**G-FIN**

Temperature 400°C (750°F)



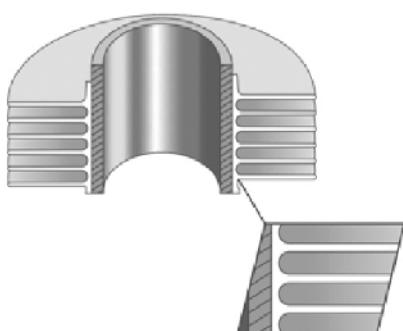
**I-FIN**

Temperature 380°C (729°F)

## EXTRUDED TUBES:

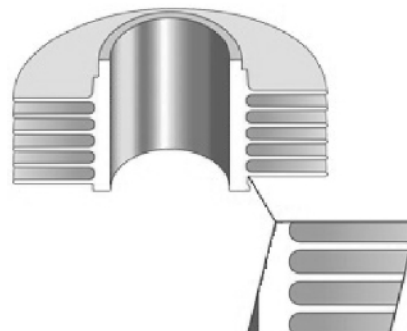
**Diameter range of base tube of 3/4" up to 2", fin number per inch: 6 – 11**

- ⦿ Fin-material: Al, Cu fins are integrally produced through in thread rolling process.
- ⦿ Base-tube-material: all materials



**BI-METALIC TUBES**

From soft metal tube on a base tube.  
 Temperature 280°C (547°F)



**MONO-METALIC TUBES**

From soft metal tube on a plug.  
 Temp. acc. to sort of material